



C+P Galvanized shelf

Steel shelf, galvanized, load capacity 70 kg, Acurado, Dimensions (H x W x D): 24 x 1194 x 429 mm

Height: 24

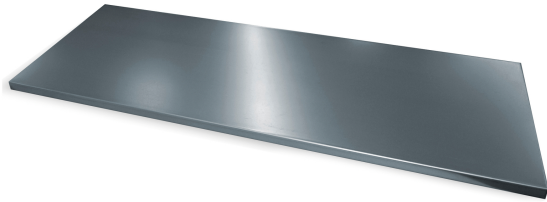
Load capacity shelves: 70

Shelves material: Steel

Surface of shelves: zinc-plated

series: Acurado-2000

delivery condition: by parcel service



€39.00*

*List price excl. VAT plus shipping costs

C + P Möbelsysteme
GmbH & Co. KG
Boxbachstraße 1
35236 Breidenbach
USt.-ID: DE 183061659

Contact:
Telephone: +49 6465 919-0
Fax: +49 6465 919-200
Email: sales@cp.de

[Terms and Conditions](#) / [Legal Notice](#) / [Privacy Policy](#)



The color concept

With our new color concept, we are not only presenting current and attractive colors for every environment, but have also greatly simplified the color surcharge system. You won't need it very often anyway, because we now offer 144 colors and color combinations at no extra charge.

Locking systems

One for everything? That was once the case. Today's locking system solutions from C+P are as diverse as the applications for which they are designed. We would be happy to advise you on the options available for your specific project.

Accessories

Want to get the most out of your locker or steel cabinet for your practice? C + P offers a wide range of additional equipment.

Trust is good, but ...

control is better. At least when it comes to quality assurance. That is precisely why both our manufacturing processes and the C+P products themselves are subject to extremely demanding quality management, which is essentially based on two column bases: our in-house test laboratory on the one hand and, of course, regular external inspections and controls on the other.



Many of our products are GS-tested by TÜV Thüringen. We will be happy to send you copies of the relevant certificates on request.



C + P Möbelsysteme
GmbH & Co. KG
Boxbachstraße 1
35236 Breidenbach
USt.-ID: DE 183061659

Contact:
Telephone: +49 6465 919-0
Fax: +49 6465 919-200
Email: sales@cp.de

Terms and Conditions / Legal Notice / Privacy Policy

