



C+P locker, Classic PLUS, frame, 2 cases, 2120x400x500mm, 7035/5012

z Locker Classic PLUS, for 2 people, 1 compartment divided in a Z-shape, compartment width 400 mm, body made of sturdy steel structure with high-quality enamel coating for high UV and corrosion resistance, with rear louvers at the top and bottom, inside convenient hanging room for long items of clothing despite limited space, 1 sturdy changing room rail made of oval profile with 4 twist-proof double sliding hooks incl. system holder for each case, with frame made of sturdy square tubular steel 30 x 30 mm, with adjustable floor gliders for easy level adjustment. System holder, with frames made of sturdy square steel tube 30 x 30 mm, with adjustable floor gliders for easy level adjustment, 2 Set of doors, consisting of right and left-hand Basic PLUS doors with soft stop and closed side profiles for high stability, with ventilation gills at the top and bottom and punched label holder, door mounted on bolt hinges, Door openings 110 degrees, 2 Cylinder locks with 2 keys, locking circuit up to 1000 different key numbers, Dimensions (H x W x D): 2120 x 400 x 500 mm, Color: RAL 7035 light gray, Doors: RAL 5012 light blue, Frame: RAL 7021 black gray

Product advantages:

- + Z-shaped layout for hanging long items of clothing with reduced space requirements in the room
- + Body with ventilation openings at the top and bottom for optimum air circulation
- + Closed door side profiles for high torsion resistance
- + Fronts with additional ventilation gills for even more effective ventilation
- + Level adjustment for easy compensation of uneven floors
- + Break-open protected construction according to level B in accordance with DIN 4547

Door opening angle: 110

Depth: 500

Opening dimensions door (height): 1142

lock: cylinder lock

Substructure: frame

Body color: RAL 7035 light gray

Height: 2120

Front color: RAL 5012 light blue

Number of compartments: 1

Inner depth: 477

Total internal height: 1637

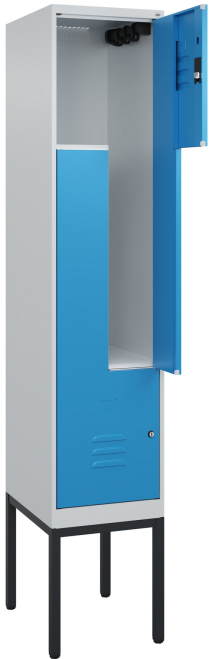
Width: 200/400

Inner width other: 206

Guarantee: 10

Weight: 25.6

Opening dimensions door (width): 157



€786.00*

*List price excl. VAT plus shipping costs

C + P Möbelsysteme
GmbH & Co. KG
Boxbachstraße 1
35236 Breidenbach
USt.-ID: DE 183061659

Contact:
Telephone: +49 6465 919-0
Fax: +49 6465 919-200
Email: sales@cp.de

Terms and Conditions / Legal Notice / Privacy Policy



The color concept

With our new color concept, we are not only presenting current and attractive colors for every environment, but have also greatly simplified the color surcharge system. You won't need it very often anyway, because we now offer 144 colors and color combinations at no extra charge.

Locking systems

One for everything? That was once the case. Today's locking system solutions from C+P are as diverse as the applications for which they are designed. We would be happy to advise you on the options available for your specific project.

Accessories

Want to get the most out of your locker or steel cabinet for your practice? C + P offers a wide range of additional equipment.

Trust is good, but ...

control is better. At least when it comes to quality assurance. That is precisely why both our manufacturing processes and the C+P products themselves are subject to extremely demanding quality management, which is essentially based on two column bases: our in-house test laboratory on the one hand and, of course, regular external inspections and controls on the other.



Many of our products are GS-tested by TÜV Thüringen. We will be happy to send you copies of the relevant certificates on request.



C + P Möbelsysteme
GmbH & Co. KG
Boxbachstraße 1
35236 Breidenbach
USt.-ID: DE 183061659

Contact:
Telephone: +49 6465 919-0
Fax: +49 6465 919-200
Email: sales@cp.de

Terms and Conditions / Legal Notice / Privacy Policy

